

FUJIFILM

X100S

For more information, please visit our website:

<http://fujifilm-x.com/x100s/>

Sample photos in this catalog are simulated images.

Microsoft, Windows and Windows logo are trademarks,  
or registered trademarks of Microsoft Corporation in the United States and/or other countries.  
Macintosh and Mac OS are trademarks of Apple Computer, Inc., registered in the U.S. and other countries.  
HDMI, the HDMI Logo, and High-Definition Multimedia interface are either trademarks or registered trademarks of HDMI Licensing.  
SDXC logo is a trademark. All other trademarks are the property of their respective holders.  
Adobe is a trademark or registered trademark of Adobe Systems Incorporated in the United States and/or other countries.  
SILKYPIX® is a registered trademark of Ichikawa Soft Laboratory Co., Ltd. in Japan.



Specifications are subject to change without notice.

FUJIFILM  
FUJIFILM Corporation

Ref.No.EB-1066E (SK・12・12・F2586・F9711) Printed in Japan © 2013 FUJIFILM Corporation

X  
FUJIFILM





Capturing each image beautifully,  
the APS-C sensor size and OLPF-less X-Trans architecture  
deliver image quality that will impress.

Designed to capture each frame faster and more accurately,  
the EXR Processor II with embedded phase detection  
AF and dual CPUs accelerates each camera operation  
for a more rapid response.

X100S. Taking the essentials to new extremes.

# Classic Evolution.

## X100S









# Leading the way to the ultimate image quality. APS-C 16M X-Trans CMOS II & EXR Processor II

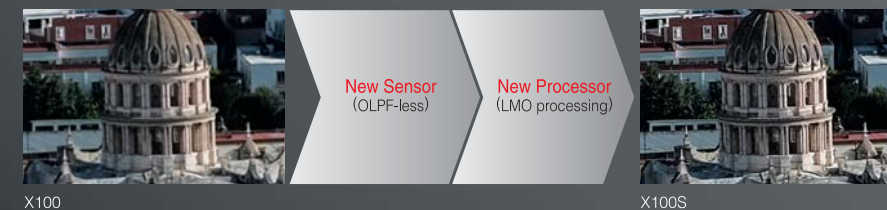
The extreme resolution of FUJIFILM's bespoke APS-C 16M X-Trans CMOS II sensor with OLPF-less architecture. The clarity of the signal achieved by the optimization of every aspect of its processing circuitry. The enhanced image quality produced by the powerful EXR Processor II.

## X-TRANS CMOS II & EXR PROCESSOR II



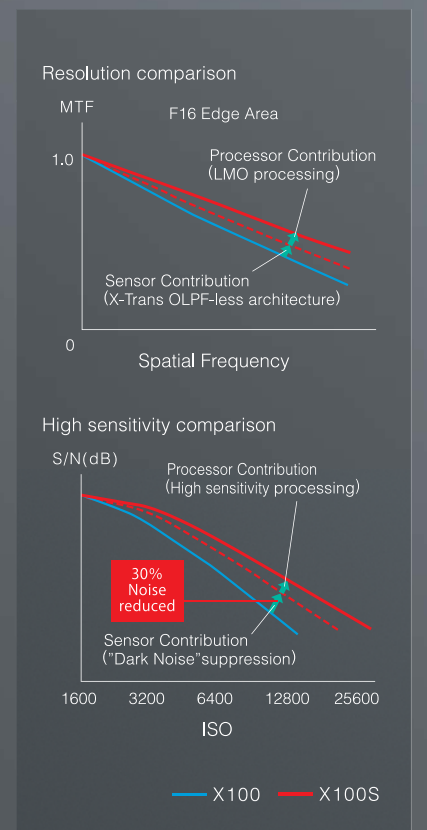
Advanced technology transfers the power of the lens into true-to-life photos.

X-Trans CMOS II incorporates an original color filter array with a highly random pattern, eliminating the need for an optical low-pass filter (OLPF). These filters are used in conventional systems to inhibit moiré at the expense of resolution. The X-Trans CMOS II array lets the sensor capture unfiltered light from the lens, achieving an unprecedented level of resolution. In addition, utilizing the enhanced performance of the EXR Processor II, Lens Modulation Optimizer (LMO) factors are calculated to compensate for aberrations and diffraction blur that occur when light passes through the lens and then are applied to produce images with amazing sharpness.



### Setting new standards in low noise performance X-Trans CMOS II & EXR Processor II

In the X-Trans CMOS II sensor, the optimized circuits elevate the S/N ratio and produce a clean signal that is enhanced by the powerful new EXR Processor II for a further increase in image quality. The original signal processing of the X-Trans array featuring advanced noise separation technology combines with a newly developed noise reduction process that exploits the color differential to suppress chromatic blur, resulting in image quality far beyond its sensor size.





# Breaking the speed limits with high-speed AF and fast start up. X-Trans CMOS II & EXR Processor II

The advanced APS-C X-Trans CMOS II sensor features embedded phase detection pixels and an optimized AD converter for faster signal readout and accelerated operations, while the new EXR Processor II more than doubles processing performance compared with the previous generation processor.\*<sup>1</sup> From the world's fastest AF of 0.08 sec.\*<sup>2</sup> to a near-instant start up, the X100S's response times are an absolute delight.

## X-TRANS CMOS II & EXR PROCESSOR II NEW



Auto-switching between phase detection and contrast AF.  
New Intelligent Hybrid AF brings your scene into focus in only 0.08 sec.\*<sup>2</sup>



Equipped with both the super fast phase detection AF system and contrast AF for accurate focusing in dark scenes, Intelligent Hybrid AF instantly switches to the optimal focusing system. Applying the fastest algorithm depending on the subject and scene, Intelligent Hybrid AF can bring your subject into focus in the blink of an eye – only 0.08 sec. at its fastest speed so those priceless moments will never escape your lens.

EXR Processor II  
Double the processing speed of the previous generation.

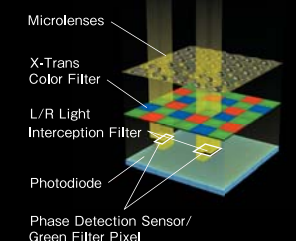
The image processing power of the newly developed EXR Processor II not only produces images with increased resolution and higher quality at higher speeds, but also accelerates operational responses. Adoption of a dual CPU and increased clock frequency elevate performance to about twice the processing speed of the previous generation processor.\*<sup>1</sup> These improvements also speed up operation, reducing start-up time to only approx. 0.5 sec.\*<sup>3</sup> Working in tandem with the high-speed signal readout of the X-Trans CMOS II sensor, the processor reduces the shooting interval to 0.5 sec, and raises the maximum continuous shooting speed to 6.0fps (max.31 frames\*<sup>4</sup>).

AF Speed (Fastest Time)	
	<b>0.08 sec.*<sup>2</sup></b>
Start-up time	<b>0.5 sec.*<sup>3</sup></b>
Photography interval	<b>0.5 sec.</b>
Shutter time lag	<b>0.01 sec.</b>

### X-TRANS CMOS II

OLPF-less architecture and the original pixel array are the keys to resolution rivaling larger sensors. Also the unique integration of phase detection pixels in the array contributes to the dramatic leap in AF speed.

OLPF-less architecture and the revolutionary pixel array



What is OLPF-less architecture?

By eliminating the need for an optical low-pass filter, the sensor delivers higher resolution while inhibiting moiré and false colors.

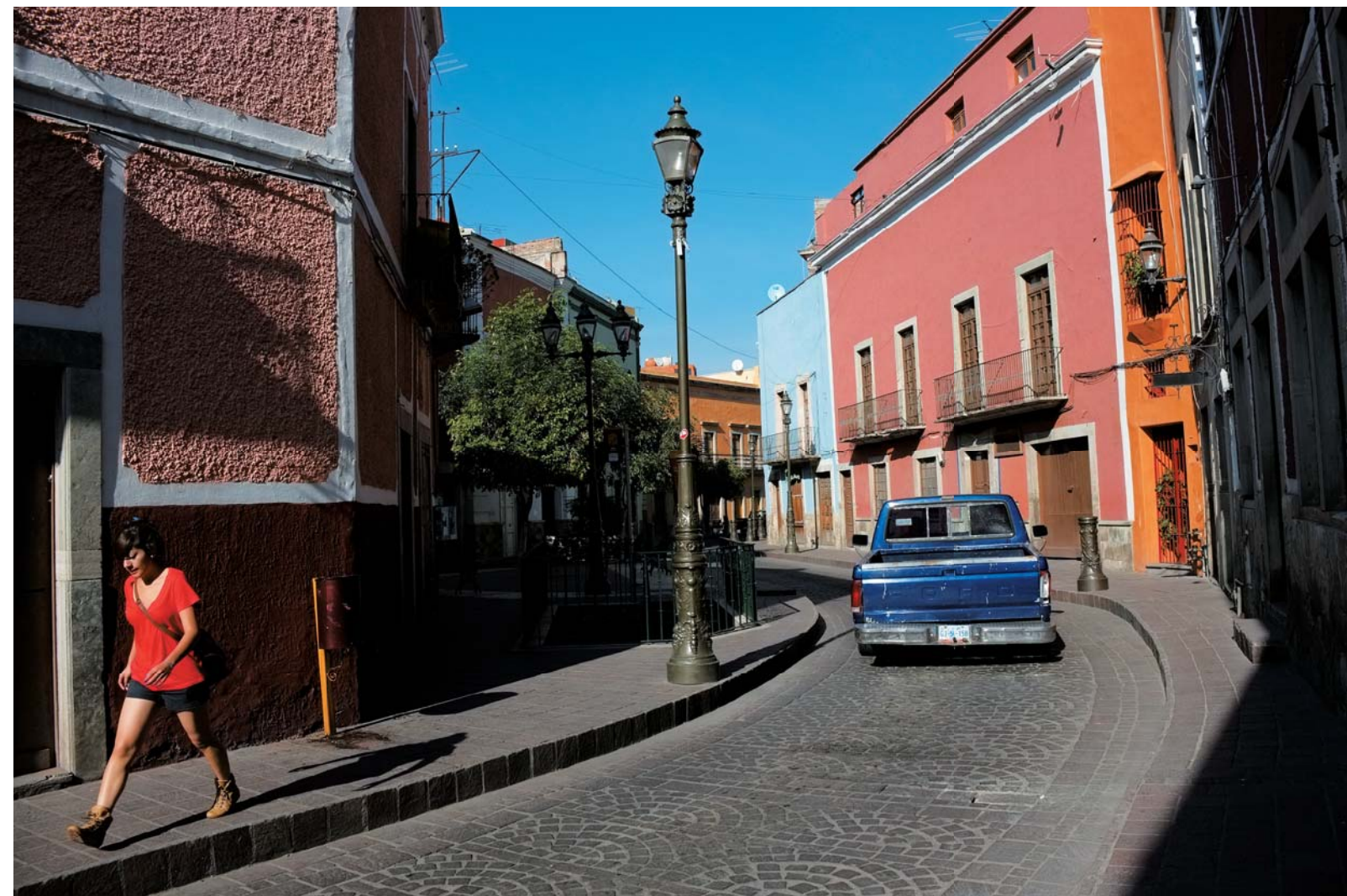
\*<sup>1</sup> Compared with the EXR Processor Pro. \*<sup>2</sup> FUJIFILM research as of November 2012. Compared with other digital cameras equipped with an 4/3-inch sensor or larger, based on CIPA standards, and conducted in High Performance mode with AREA-AF.  
\*<sup>3</sup> High Performance mode. \*<sup>4</sup> Max. number of frames can be shot in JPEG setting.



# See things your way - the Hybrid Viewfinder offers the freedom of choice.

Depending on the subject and scene, you have the power to instantly switch between two viewfinder views : optical or electronic.

The visionary Hybrid Viewfinder that reinvented the essential pleasure of looking through the eyepiece and capturing each moment, has evolved with new levels of enhanced performance.

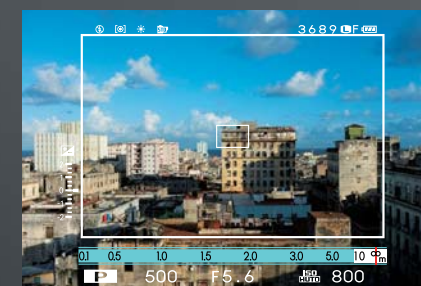


## HYBRID VIEWFINDER NEW



Optical Viewfinder (OVF) or Electronic Viewfinder (EVF). With the X100S, you have the choice.

Select the Optical Viewfinder when you want to see your subject in the same bright clarity that you see with the naked eye, or when time lag is an issue. Select the EVF to visually check focus, exposure, white balance and depth of field while you compose your shot. Depending on the shooting conditions and your creative aims, you have the freedom to switch between 2 viewfinders.



Optical Viewfinder (OVF)  
Composite display of a clear optical image and  
LCD panel information



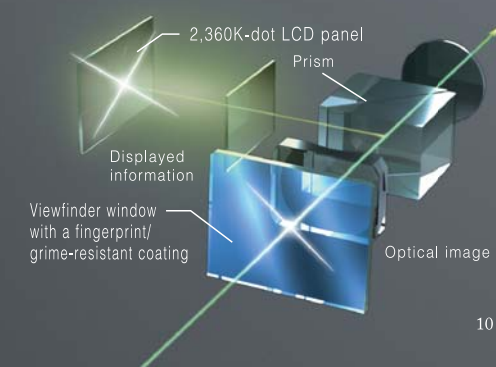
Viewfinder switch lever



Electronic Viewfinder (EVF)  
Display of LCD panel image and information.

### Extra high resolution EVF for improved viewing

Featuring 0.5x magnification and a horizontal apparent field of view of 26°, the improved EVF provides a comfortable and natural view of the entire scene. Optimum viewfinder performance under tough conditions is ensured by a protective coating on the viewfinder surface which is resistant to fingerprints and dirt. The 2,360K-dot LCD panel makes it one of the highest resolution EVFs ever produced, but above all, it provides you with a beautiful canvas to frame and compose your shots with confidence and precision.





# 23mm F2 FUJINON fixed focal length lens for quality without compromise in a slim compact body.

The superb performance of the bright lens is cleverly integrated into the slim compact body, ensuring it is perfectly pocketable.

The versatile focal length of 35mm (35mm format equivalent) delivers an angle of view ideal for a diverse range of subjects, scenes and whatever captures the photographer's eye.



## FUJINON 23mm F2 LENS



### Optical design with a priority on performance.

The simple all-glass lens configuration (6 groups/8 elements) is designed around a single high-performance double-sided aspherical lens. Uncompromising image quality is assured by the application of multi-layer HT-EBC (High Transmittance Electron Beam Coating) and other technologies. The result is perfectly balanced optical excellence promising low aberrations, sharp resolution and faithful color reproduction.



### Capture superb "bokeh" effects with the 9-blade aperture diaphragm.

Providing a circular opening at the largest aperture, the 9-blade aperture diaphragm lets you capture perfectly defocused background effects. Even with a slightly wide angle, the background is softly out of focus while the foreground is sharply defined.



### Get closer with 10cm Macro Photography.

The X100S lets you bring the edge of the lens as close as 10cm from your subject. Outstanding shooting range and exceptional performance in a variety of scenes set this lens apart.



### Command exposure in bright scenes with the built-in ND Filter.

Equivalent to 3 f-stops, the ND filter in the X100S lens reduces the amount of light to 1/8. It's perfect for situations where the light is very strong but you want to shoot at a slow shutter speed or do not want to close the aperture.





# Wide Conversion Lens<sup>\*1</sup>

## Broadening the scope of X100S expression is as simple as adding this lens.

Specifically designed to seamlessly unite with the look and feel of the X100S lens without impacting on its exceptional performance, the Wide Conversion Lens expands the angle of view from the original 35mm<sup>\*2</sup> to 28mm<sup>\*2</sup>. Landscapes become more dynamic and the depth of wide macro shots will amaze. Its very light weight of 140g and compact design let you explore a wider range of expression without sacrificing the excellent portability of the X100S.

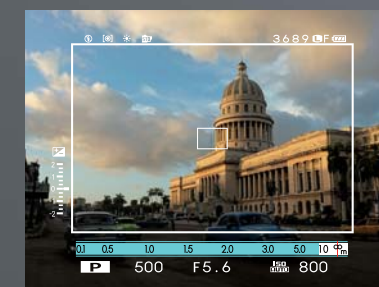


## WIDE CONVERSION LENS



### Compact form and X100S design unity.

The Wide Conversion Lens converts the focal length by 0.8x and the angle of view to 28mm.<sup>\*2</sup> Just like adding an interchangeable lens, mounting the wide conversion lens is simple and does not affect the power of the X100S's built-in lens. When the conversion lens is mounted, the optical viewfinder displays a field of vision frame equivalent to the 28mm<sup>\*2</sup> angle of view, enabling comfortable composition and viewing of the subject. The Wide Conversion Lens can be used with the bespoke lens hood, protector filter and other X100S accessories.



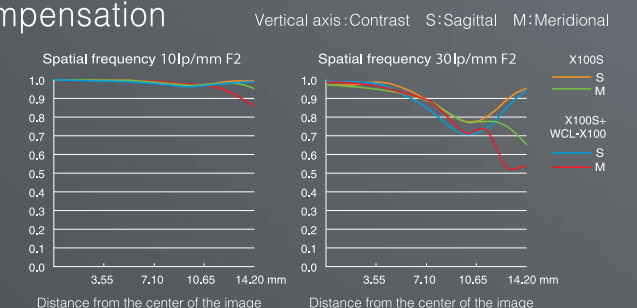
35mm<sup>\*2</sup>



28mm<sup>\*2</sup> Wide Conversion Lens Mode

### Excellent optical performance and optimized compensation deliver resolution rivaling the X100 prime lens.

Optimized compensation is performed for the slight degree of distortion, chromatic aberration and decreased light volume in edge areas that occurs when the Wide Conversion Lens is mounted, allowing you to fully enjoy the superb resolution of the X100S optics.



\*1 Sold separately \*2 35mm format equivalent





# Master 3 Manual Focus Modes.

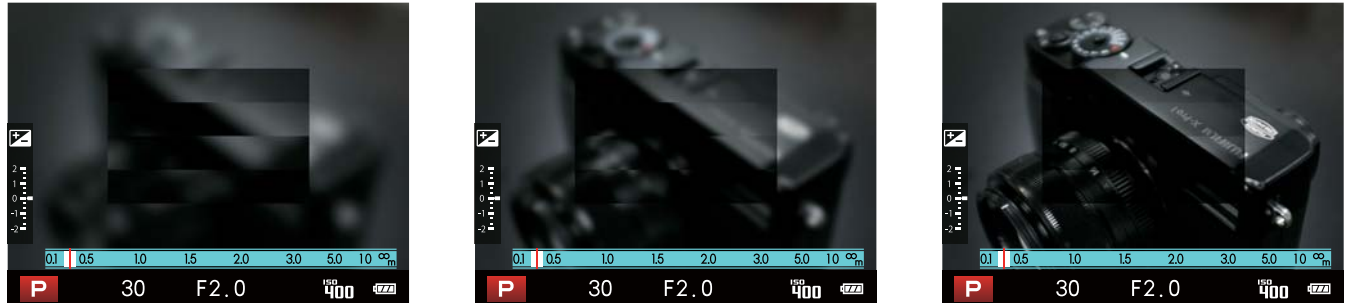


## ► Digital Split Image NEW

"Digital Split Image", the world's first manual focus system\* to exploit the power of phase detection pixels.

Tapping the power of the phase detection pixels integrated in the X-Trans CMOS II sensor, Digital Split Image helps you manually focus your shot with greater precision. While checking the split image displayed in the LCD monitor or EVF, you can manually adjust for pinpoint focus, especially helpful when working with an open aperture or macro shooting.

"Digital Split Image" display available on the LCD monitor or in the EVF



Out of focus —————> Correct Focus

## ► Focus Peak Highlight NEW

For pinpoint manual focusing

When manually adjusting focus, this function highlights high contrast areas of your subject for smoother and more accurate focusing.



## ► Manual Focusing

Exactly the focus that you want

In the viewfinder, the distance index bar is displayed together with the depth of field scale and aperture value, providing helpful guides for focusing. For pinpoint precision in manual focus mode, just press the Command Dial and confirm sharpness with a 4x zoom view of the focus point. And at a touch of the AE/AF Lock button, you activate the built-in Focus Aid function for automatic focusing of the subject in the focus frame.





High Key Enhance brightness and reduce contrast to lighten tonal reproduction.

# Advanced Filters NEW

Artistic photography made fun and simple.

Featuring a choice of 8 artistic effects, FUJIFILM's Advanced Filters make it easy to transform your photo into a work of art. Before you press the shutter, you can preview the effect on the EVF or LCD monitor. Manual control of the filters also lets you fine-tune brightness.



Miniature Adds top and bottom blur for a diorama or miniature effect.



Toy Camera Create shaded borders as if you were taking a photo on a toy camera.



Pop Color Emphasizes contrast and color saturation.



Low Key Create uniformly dark tones with few areas of emphasized highlights.



Dynamic Tone Create a fantasy effect by dynamically-modulated tonal reproduction.



Partial Color ( Red / Orange / Yellow / Green / Blue / Purple ) Retain one selected original color and change the rest of the photo to black and white.



Soft Focus Create a look that is evenly soft throughout the whole image.



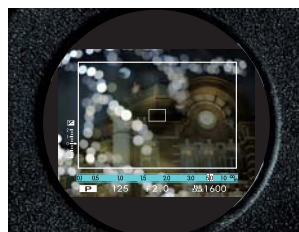


## Add a New Dimension to Photographic Expression with Multiple Exposure NEW

Just select Multiple Exposure mode and take your first shot using either OVf or EVF. Next, while viewing the first image, you can frame and shoot the second exposure. This ability to precisely position and focus the second shot lets you not only 'see' how the finished Multiple Exposure image will look, but also explore other creative photographic possibilities.



1st shot



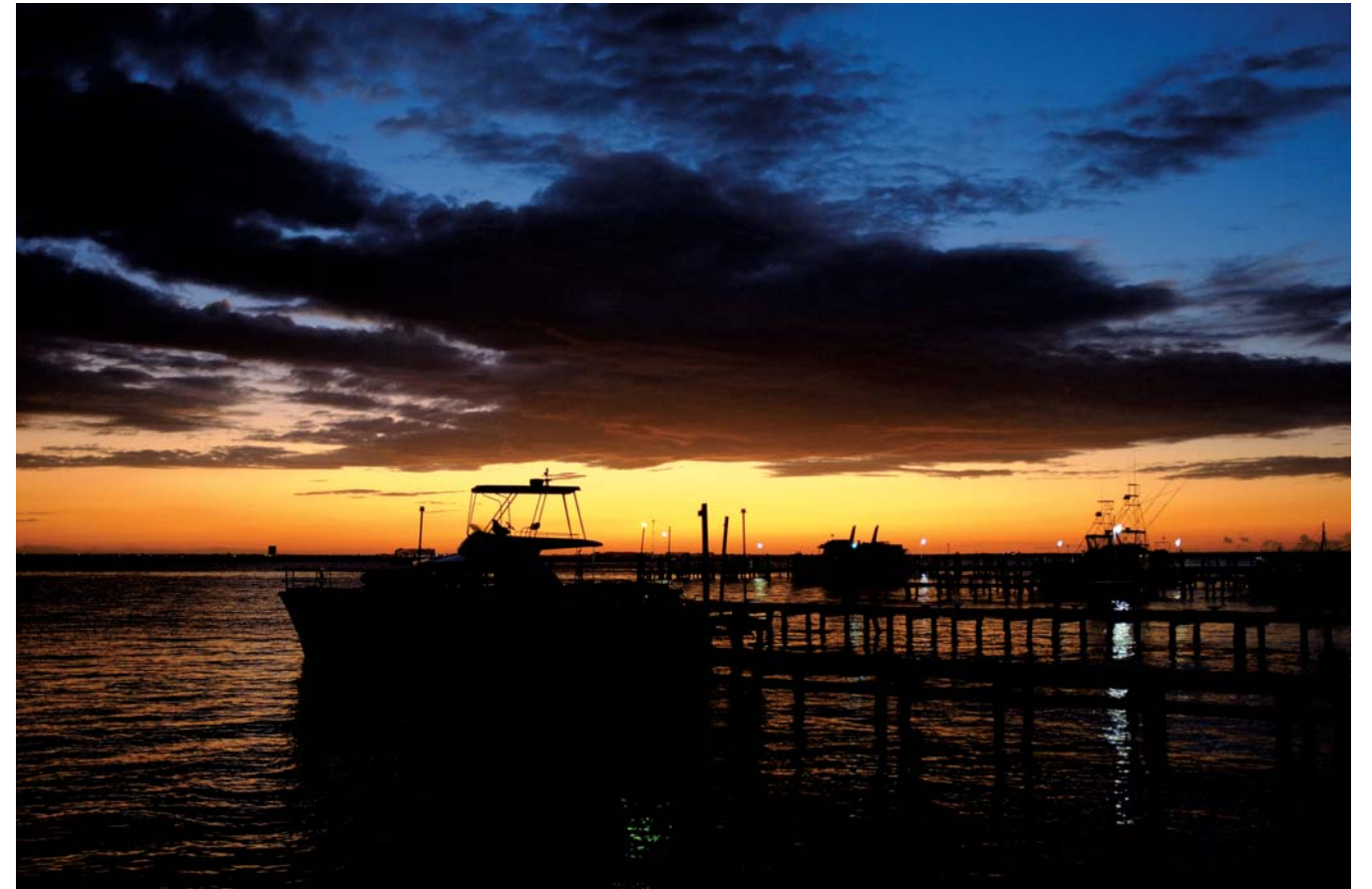
2nd shot



Multiple exposure result

## Replicate FUJIFILM's acclaimed color reversal photo films with Film Simulation.

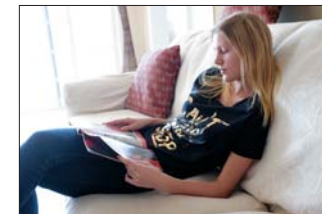
Just like choosing the ideal film for your creative direction, this powerful mode lets you simulate the film color and tonal qualities of FUJIFILM's acclaimed color reversal films: the natural look of PROVIA, the dramatic tonality and vivid colors of Velvia, and the soft tones and beautiful skin color reproduction of ASTIA. Faithfully reproducing Fujichrome color quality loved by professional photographers, Film Simulation transforms your vision into masterpieces of color expression. You can also replicate the timeless beauty of monochrome film photography with a selection of monochrome filters.



**Velvia** Ideal for photographing landscapes and flowers, the vividly saturated colors and dramatic tonality record color that is as real as your memories.



**PROVIA**  
Acclaimed for reproduction of true-to-scene natural color quality, the versatility of this film simulation mode makes it an ideal all-around choice.



**ASTIA**  
Capturing both natural skin gradations and brilliant color tonality, this film simulation mode is a favorite for outdoor snap photography.



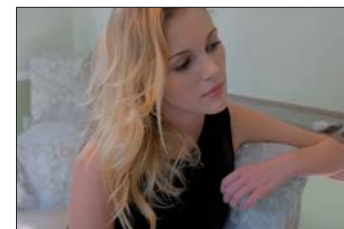
**SEPIA**  
Defined by warm tones, SEPIA is a wonderful choice when shooting an especially memorable photo of a wedding, birthday or other commemorative occasion.



**MONOCHROME**  
Heighten contrast with the Ye filter and R filter. Brighten greens and deepen reds with the G filter.

## PRO Neg.Std NEW

Every detail captured with gentle tonality.



Beloved of studio portrait photographers, the look of professional color negative film is replicated in the exceptionally soft and smooth skin tonality of PRO Neg.Std. In outdoor shooting, this mode exquisitely captures even subtleties in the atmosphere of the scene and produces a photo with extremely soft tones.

## PRO Neg.Hi NEW

Heighten tonal contrasts while preserving soft skin tones.



Developed for subjects in motion and constantly changing conditions, PRO Neg.Hi slightly enhances color saturation and contrasts. Even in soft light, this mode brings out subtle color contrasts. In outdoor portraits, it can preserve natural soft skin tones while accenting the tonal contrasts that define dramatic scenes.





# Expanded Accessory Lineup



**NEW** Leather Case  
LC-X100S



Wide Conversion Lens  
(Silver)  
WCL-X100



Lens Hood  
(includes Adapter Ring)  
LH-X100



Adapter Ring  
AR-X100



**NEW** Stereo Microphone  
MIC-ST1



Shoe Mount Flash  
EF-X20  
\*2 AAA batteries required.



Shoe Mount Flash  
EF-20  
\*2 AA batteries required.



Shoe Mount Flash  
EF-42  
\*4 AA batteries required.



Protector Filter  
PRF-49S  
Size:  $\phi$ 49mm \*Adapter ring required.







## Enjoy the exceptional definition of Full HD Movie Shooting! NEW

Full HD Movie (1920x1080) mode offers not only the standard 30fps but also 60fps for smoother capture of the action. Shooting movies at the high bit-rate of 36Mbps results in reduced noise and enhanced image quality and clarity that reveals every detail from individual leaves in the trees to subtle changes in facial expression. You can also take advantage of Monochrome and the vivid color expression of other Film Simulation modes, and exploit the brightness of the lens to shoot movies with a stunning “bokeh” effect.



## Intelligent Hybrid AF also keeps you focused on your movie.

Automatically switching between phase detection AF and contrast AF depending on the scene, Intelligent Hybrid AF also demonstrates high-speed and high precision autofocus performance in movie shooting.

## FULL HD MOVIE x FILM SIMULATION



**PROVIA**  
True-to-life natural tonality and color reproduction.



**Velvia**  
Shoot HD Movies in the vibrant colors of Velvia.



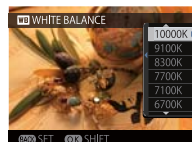
**MONOCHROME**  
Capture the action in richly expressive monochrome tones.



**USB Multi-connector port**  
Connect the external stereo microphone (sold separately) to the X100S's new USB Multi-connector port using the adapter included with the microphone and record audio quality to match the visual beauty of your HD movies.



**MIC LEVEL ADJUSTMENT**  
Adjust the microphone volume level (4 settings) while watching the level meter for optimum audio recording to prevent either loss or distortion.



**WHITE BALANCE Setting**  
Kelvin temperature setting is available for detailed correction to match the color temperature of the shooting location. Fine tune white balance to capture natural skin color or to express your creative intent.

## Shooting and Playback functions in touch with your creativity

### 【 Exposure Control 】

At a glance you know your current Aperture and Shutter settings without powering up.

When you hold the camera for a shot, your left hand naturally controls the Aperture Ring and your right comfortably finds the Shutter Speed Dial. Everything is ideally positioned so you can concentrate on composing your shot. You are in complete control with a choice of aperture priority AE, shutter speed priority AE, program AE and manual exposure control.



### Adjust directly with Exposure Compensation Dial

For photographers who always want access to detailed exposure control, the Exposure Compensation Dial is positioned in easy reach of your right thumb for smooth  $\pm 2\text{EV}$  adjustment in 1/3EV steps without taking your eye from the viewfinder.



### “T” (Time) & “B” (Bulb) Long Exposure Modes

Turn the shutter speed dial to “T”, set a time between 1/2 and 30 seconds (1/3EV steps), and the countdown begins. In “B” mode, you can keep the shutter open for a maximum of 60 minutes.

### Easy-to-use AE/AF Lock button

With a touch of the special AE/AF Lock button on the back of the camera body, you can lock both exposure and focus for the subject. Using the setup menu, you can also set the button to lock only AE or AF.

### Selectable Metering modes

From a choice of “MULTI” metering for accurate response to a variety of lighting conditions, “SPOT” metering for precise reading of approximately 2% of image area in the center of the screen, and “AVERAGE” metering for an average exposure setting for the entire scene, you can swiftly select the best metering for your shot.

### 【 Shutter Sound Selection 】

Select from 4 types of shutter sound: Lens Shutter, Focal Plane Shutter, Mirror Up, and Silent Shutter.

### 【 HIGH PERFORMANCE LCD MONITOR 】

**2.8-inch, 460K-dot LCD with High Contrast, High Brightness and the convenience of a Wide Viewing Angle**

On the LCD, you can view the same image displayed in the electronic viewfinder. You can also switch it to show a simple shooting data display.

### Aspect Ratio

In addition to, 3:2 and 16:9, the X100S expands creative expression with a new 1:1 “square” aspect ratio.

### 【 Q (Quick Menu) Button 】 NEW

Fast Shortcut to Shooting Menu Settings

Press the Q (Quick Menu) button and skip directly to a choice of ISO sensitivity, Film Simulation and other frequently used shooting menus. Then just use the selector button and the main or sub command dial to choose a menu and make settings even while shooting.



### 【 Menu Screen 】

Swift Menu Page Selection and Scroll-free Navigation Within Each Page

In the Shooting and Playback menus, functions are organized into tabbed single-page screens for fast selection and setting. Just select a tab and find the item in the displayed list without scrolling.



### 【 Shutter Counter 】 NEW

Previously shown in the menu screen, the total number of shutter releases is now displayed as a counter that shows every 100 shots.



### 【 FOCUSING 】

**Focus Mode selector (AF-S, AF-C and MF)**

The focus mode selector on the side of the camera lets your fingers smoothly find and switch between AF-S (Single AF), AF-C (Continuous AF) and MF (Manual) while looking through the viewfinder.



### Selectable AF with a 49-point Metering Matrix

Within the screen, the auto focus area is divided into a 49-point matrix. AF accurately and swiftly recognizes the primary subject and brings it into crystal clear focus, and also lets you freely select the position of the AF frame. You can also change the AF frame size and pinpoint the focusing.



### 0.01-sec. Shutter Time Lag

The shutter time lag is only 0.01 sec., so you can capture the precise instant you wish to and enjoy a comfortable shooting experience.



## 【 WHITE BALANCE SETTING 】

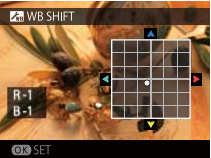
### Color Temperature (Kelvin Value) Setting

Compensate for the color of different light sources with a choice of 9 white balance presets in addition to Auto White Balance. You can also make custom white balance settings using a gray card or other surface, or by selecting the optimum color temperature (Kelvin value).



### Precise White Balance Setting

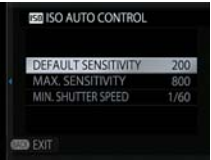
Fine-tune white balance by adjusting R (Red)⇔Cy (Cyan) and B (Blue)⇔Ye (Yellow) in ±9 steps. You can make adjustments and confirm their effect on the actual image during shooting. With this powerful setting, you can adjust individual white balance parameters, tweak settings for the more accurate correction of white balance or explore the creative effects that can be achieved with filters.



## 【 ISO Sensitivity 】

### ISO100~25600 Sensitivity setting range

Select from the broad sensitivity range of ISO100~25600 for shooting at full 16-megapixel resolution. The X100S also lets you set the AUTO ISO range (up to ISO6400) and the shutter speed limit. For quick access to ISO settings, you can assign this function to the Fn or Q Button.



## 【 Flash 】

### Super Intelligent Flash

Adopting FUJIFILM's original TTL automatic flash control technology, the built-in high-precision flash system is ready to supplement lighting when shooting small items or capturing special occasions indoors and other low-light scenes. When even more light is required or shooting with the lens hood attached, you can use a separately sold TTL flash.

## 【 RAW PHOTOGRAPHY 】

### 14-bit RAW Shooting

NEW

The higher precision 14-bit RAW data format lets you record moments with richer tonality and recover more detail.

### In-camera RAW Converter

The built-in RAW data converter lets you view results in the field without first transferring the data to a PC. This easy-to-use feature not only takes into account exposure compensation, white balance and other in-camera image quality settings, but also lets you apply Film Simulation modes in the converter mode.

## 【 IMAGE QUALITY CONTROL 】

### Color, Tone & Sharpness Adjustment



Fine-tune image quality with "COLOR" for color saturation adjustment, "HIGHLIGHT TONE" and "SHADOW TONE" for tweaking contrast in highlights and shadows, and "SHARPNESS" to stress or soften image outlines. With this built-in detailed image quality control, you can produce an image that precisely matches your creative objectives.

### Noise Reduction Control

NR

Choose from 5 different levels of noise reduction depending on whether your priority is the crispness of resolution or keeping noise reduction to a minimum, and explore the capability to tune sensitivity-related textural quality when shooting high-sensitivity scenes.

## 【 High-Speed Continuous Shooting & Bracketing Functions 】

### Maximum High-Speed Continuous Shooting Speed of 6.0fps (max. 31 frames\*)

Shoot at a maximum burst speed of 6fps at full 16-megapixel resolution to capture a series of exposures of moving subjects and other challenging photographic scenes and later select the best shot.

\*Max. number of frames can be shot in JPEG setting.

### Selection of various Auto Bracketing functions

Empowering you with a choice of 4 different auto bracketing functions (AE, ISO Sensitivity, Dynamic Range and Film Simulation), the X100S lets you experience a whole world of photographic expression. Film Simulation Bracketing lets you freely select and pre-set 3 different Film Simulation effects.

## 【 Motion Panorama 】

### Shoot panoramic shots and show them in stunning large-size prints.

As you sweep the camera across the scene, the X100S captures multiple images and seamlessly stitches them together into a single panoramic photo. Even when enlarged to an A3-size print, there is virtually no loss of resolution. Holding the camera horizontally or vertically, Motion Panorama lets you shoot 120° or 180° views.



## 【 Power Control System 】

### High Performance Mode

From instantaneous autofocus in as fast as 0.08 sec.\* to faster start-up, you can maximize the performance of the X100S. Also after turning OFF the power, the X100S enters a "sleep" mode (for a maximum of 24 minutes). Turn ON the power during this time, and the X100S "wakes up" instantly, reducing the normal start-up time from about 0.9 sec. to approx. 0.5 sec. ready for you to frame and capture the moment.

\*FUJIFILM research as of November 2012. Compared with other cameras with APS-C sensors based on CIPA standards and conducted in High Performance mode.

### OVF Power Save Mode

If you turn this mode on when using the optical viewfinder, the power saving system is activated, doubling the maximum number of images per full charge from 300 in normal operation. It is ideal for getting the most out of your battery capacity and getting a few more valuable shots out of your charge.

©Maximum shots from a fully charged NP-95 lithium battery pack, based on the CIPA test standard.

## 【 CUSTOMIZATION FUNCTION 】

### Assign Frequently Used Functions to the Fn Button

Assign any one of the following frequently used functions to the Fn (Function) button and enjoy smooth one-touch controls during shooting.

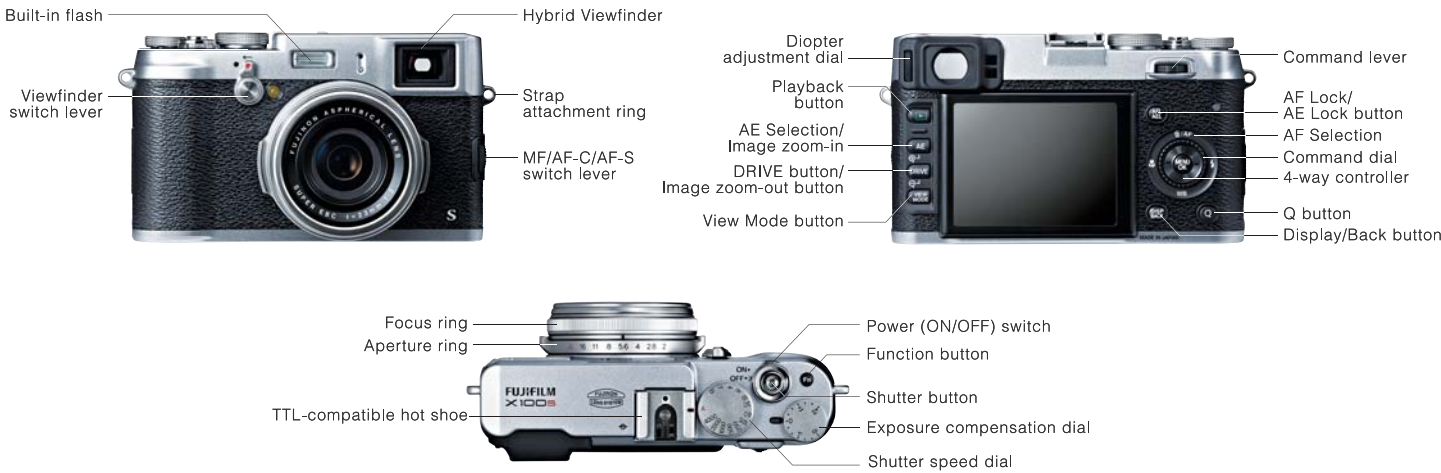
○Advanced Filters ○Depth of field confirmation ○ISO Sensitivity (default setting)  
○Dynamic Range ○Film Simulation ○ND filter ○Movie ○RAW ○Wide Conversion Lens, etc.

## 【 Eye-Fi Card Compatibility 】

NEW

### Wireless Photo Storage in Your Personal Computer

The X100S supports Eye-Fi SD memory cards with built-in WiFi for easy wireless transfer of image data to your personal computer. As you shoot, your photos can be swiftly uploaded and stored on your personal computer.



### ■ X100S Specifications

Model name		FUJIFILM X100S
Number of effective pixels		16.3 million pixels
Image sensor		23.6mm × 15.8mm (APS-C) X-Trans CMOS II with primary color filter
Storage media		Internal memory / SD memory card / SDHC memory card / SDXC (UHS-I) memory card**
File format	Still image	JPEG (Exif Ver 2.3*), RAW (RAF format), RAW+JPEG (Design rule for Camera File system compliant / DPOF-compatible)
	Movie	MOV (H.264, Audio : Linear PCM / stereo sound)
Number of recorded pixels		L : <3.2>×4896×3264 <16.9>×4896×2760 <1.1>×3264×3264 / M : <3.2>×3456×2304 <16.9>×3456×1944 <1.1>×2304×2304 S : <3.2>×2496×1664 <16.9>×2496×1408 <1.1>×1664×1664 <Motion Panorama> 180° Vertical 9600×2160 Horizontal 9600×1440 / 120° Vertical 6400×2160 Horizontal 6400×1440
Lens	Name	Fujinon Single focal length lens
	Focal length	f=23mm, 35mm (35mm format equivalent)
	Full-aperture	F2
	Constitution	6 groups 8 lenses (1 aspherical glass molded lens included)
Aperture		F2 - F16 1/3EV step (controlled with 9-blade aperture diaphragm)
Focus distance (from lens surface)		Normal : Approx. 50cm / 1.6 ft. to infinity Macro: Approx. 10cm - 2.0m / 3.9 in.- 6.6 ft.
Sensitivity		AUTO (Control available up to ISO 6400) Equivalent to ISO 200 - 6400 (Standard Output Sensitivity) Extended output sensitivity equivalent ISO 100, 12800 and 25600
Exposure control		TTL 256-zone metering, Multi / Spot / Average
Exposure mode		Programmed AE, Shutter priority AE, Aperture priority AE, Manual exposure
Exposure compensation		-2.0EV - +2.0EV 1/3EV step
Shutter speed (with mechanical shutter)		(P mode) 1/4 sec. to 1/4000* sec., (All other modes) 30 sec. to 1/4000* sec., Bulb (max.60 min.) *1/4000 sec. at F8 or smaller aperture
Focus	Mode	Single AF / Continuous AF / MF
	Type	Intelligent Hybrid AF (TTL contrast AF / TTL phase detection AF) , AF assist illuminator available
	AF frame selection	Area / Multi
Flash		Auto flash (Super Intelligent Flash) Effective range : (ISO 1600) approx. 50 cm - 9 m / 1.6ft - 29.5 ft.
Viewfinder (Hybrid viewfinder)		Optical viewfinder Reverse Galilean viewfinder with electronic bright frame display 0.5x magnification Coverage of frame area vs. capturing area : approx. 90% Electronic viewfinder 0.48-in., approx.2,360K-dot color LCD viewfinder Coverage of viewing area vs. capturing area : approx. 100% Eye point : approx. 15mm Diopter adjustment : -2 - +1 m (dpt) Built-in eye sensor
LCD monitor		2.8-inch, approx. 460K-dot, TFT color LCD monitor (Approx. 100% coverage)
Movie recording		1920 x 1080 pixels (60fps / 30fps) with stereo sound
Photography functions		Select Custom Setting, Motion Panorama, Color Space, Film Simulation, Advanced Filter, Multiple exposure, Auto Red-eye Removal, Framing Guideline, Frame No, Memory, Histogram Display, Preview Depth of Focus, Focus Check, Focus Peak Highlight, Digital Split Image, Electronic Level, RAW
Playback functions		RAW Conversion, Image Rotate, Photobook Assist, Erase Selected Frames, Image Search, Multi-Frame Playback (with Micro Thumbnail), Slide Show, Mark for Upload, Protect, Crop, Resize, Panorama, Favorites
Other functions		PictBridge, Exif Print, 35 languages, Time difference, High performance mode, OVF power save mode, Silent mode, Shutter sound select
Terminal	Digital interface	USB 2.0 High-Speed / Microphone input (only with MIC - ST1 with adapter sold separately)
	HD output	HDMI mini connector
Power supply		NP-95 Li-ion battery (included)
Dimensions		126.5 (W) x 74.4 (H) x 53.9 (D) mm / 5.0 (W) x 2.9 (H) x 2.1 (D) in.
Weight		Approx. 445g / 15.7 oz. (including battery ) and memory card / Approx. 405 g /14.3 oz. (excluding accessories, battery and memory card)
Operating Temperature		0 - 40 °C
Operating Humidity		10 - 80% (no condensation)
Guide to the number of available frames for battery operation		Approx. 330 frames
Accessories included		Li-ion battery NP-95, Battery charger BC-65N, Shoulder strap, USB cable, Lens cap, CD-ROM (Viewer software, Raw File Converter, etc.*), Owner's manual
Optional accessories		Li-ion battery NP-95, Battery charger BC-65N, Leather case LC-X100S, Lens hood LH-X100, Adapter ring AR-X100, Shoe mount flash EF-20, EF-42, EF-X20, Wide conversion lens WCL-X100, Protector Filter PRF-48S, Stereo microphone MIC-ST1

\*1 Please see the Fujifilm website to check memory card compatibility. \*2 Exif 2.3 is a digital camera file format that contains a variety of shooting information for optimal printing.

\*3 OS compatibility Viewer software : Windows8/7/Vista/XP, Raw File Converter : Windows8/7/Vista/XP,Mac OS X 10.6 - OS X 10.8