

FUJIFILM

X20



X
FUJIFILM

It's time to see what
you've been missing.

X20

Fusing cutting-edge optical technology and
real-time display of shooting data,

this viewfinder promises an accurate and brighter view of the world
the moment your eye meets the eyepiece.

In the world's fastest AF of 0.06 sec.*, the large 2/3-inch X-Trans CMOS II sensor and
the new EXR Processor II bring your image into crisp focus with
phase detection AF and capture what you see with phenomenal detail.

Faster, more beautifully and above all, a photo that only you can take.

This is the X20 experience.

Beyond this viewfinder, a new world is waiting.



Find the moment.





Revolutionary viewfinder adds real-time shooting data to the optical canvas.

Easy-to-view “real time” shooting data display.

Comprising 2 aspherical lenses, 2 glass prisms and other high performance optical elements, the real-image optical zoom viewfinder delivers 85% coverage and a 20° horizontal apparent field of view with amazing optical clarity. Integrated in less than 1mm of space in the viewfinder configuration, the Digital Trans Panel, an ultra-thin LCD panel, not only maintains the brightness of the optical viewfinder, but also provides a clear display of the focus area, shutter speed and other shooting information so you can compose your shot without taking your eye from the viewfinder.

Special prism is the key to the bright viewfinder.

The adoption of a Dach glass prism in the advanced zoom viewfinder contributes to both X20's compact size and exceptionally clear, bright view.

Depending on conditions, the color of information in the viewfinder changes.

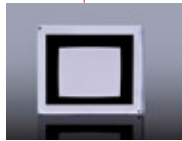
The newly developed Digital Trans panel automatically switches the color of information in the shooting frame according to the scene and shooting conditions. Normally displayed in black, shooting information is automatically displayed by green LEDs for enhanced visibility in especially dark scenes. This function also applies to the display of the focusing area frame when AF fixes on a subject. And when an error occurs, the displayed information changes to red to aid your shooting decisions

Eye sensor for ease-of-use when using the Viewfinder.

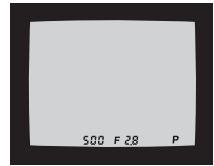
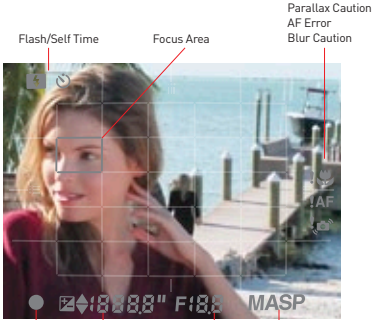
The embedded eye sensor on the right-hand side of the viewfinder instantly detects when you are looking through the eyepiece and then triggers the display of shooting data in the viewfinder. Take it away from your eye and it automatically switches the scene display to the LCD monitor. It is also possible to restrict the shooting information display to only the viewfinder or the LCD monitor (Eye Sensor OFF). The handy diopter adjustment control dial on the left-hand side of the viewfinder ensures comfortable viewing if you wear glasses.



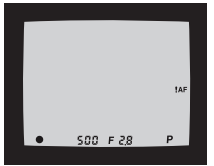
Dach glass prism



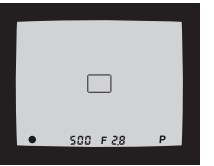
Digital Trans Panel
exclusively designed for X20



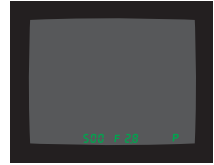
Under bright conditions



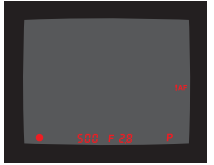
AF error Display



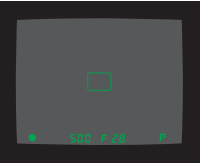
When AF fixes on a subject



Under dark conditions



AF error Display



When AF fixes on a subject



Diopter adjustment control dial

Eye sensor

NEW

Advanced Optical Viewfinder

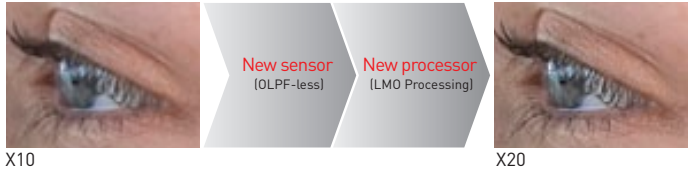


OLPF-less architecture and the newly developed 2/3-inch 12M X-Trans CMOS II processing capture your world with crystal clarity.



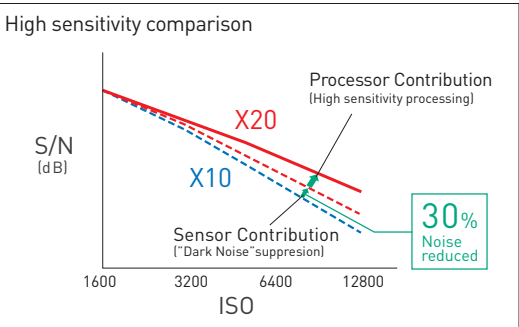
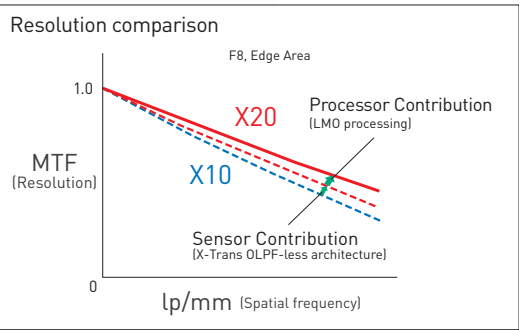
Advanced technology and processing help transfer the power of the lens into true to life photos.

X-Trans CMOS II adopts an original color filter array with a highly random pattern, eliminating the need for an optical low-pass filter (OLPF), which is used in conventional systems to inhibit moiré at the expense of resolution. This lets the sensor directly capture the high resolution performance of the X20 lens. Also exploiting the enhanced performance of the EXR Processor II, Lens Modulation Optimizer (LMO) factors are calculated to compensate for aberrations and diffraction blur that occur when light passes through the lens and then are applied to produce images with amazing sharpness.



Low-noise X-Trans CMOS II & EXR Processor II

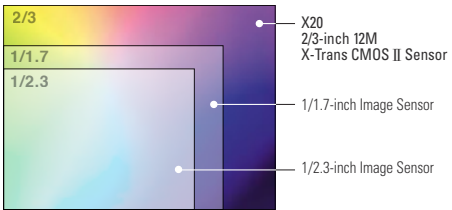
Optimization of the X-Trans CMOS II reduces noise by over 30%* for an improved S/N ratio. The quality of the clean signal is further enhanced by the new EXR Processor II. The original signal processing of the X-Trans array featuring advanced noise separation technology combines with a newly developed noise reduction process that exploits the color differential to suppress chromatic blur, resulting in image quality far beyond its sensor size.



Simulated testing of X10 and X20 under experimentally identical conditions.

Focused on bringing you the ultimate image quality.
2/3-inch 12M X-Trans CMOS II Sensor

Originally developed by FUJIFILM for the X20, the 2/3-inch X-Trans CMOS II sensor inherits the same architecture and features of the high performance sensor found in the acclaimed X-Pro1 flagship model. Adoption of BSI (backside illumination) technology enables the successful incorporation of phase detection pixels into the array without affecting sensitivity performance-the key to X20's high-speed AF.



X-TRANS CMOS II & EXR PROCESSOR II

NEW



Fast start-up, near-instant autofocus
and no time lag when you press the shutter.



Double the processing speed of a conventional image processor.

The blazing image processing performance of the newly developed EXR Processor II not only produces images with increased resolution and higher quality at higher speeds, but also accelerates operational responses. Adoption of a dual CPU and increased clock frequency elevate performance to about twice the processing speed of the previous generation*1. These LSI improvements also speed up operation, reducing start-up time to only about 0.5 sec.*2 Working in tandem with the high-speed signal readout of the X-Trans CMOS II sensor, the processor reduces the shooting interval to 0.5 sec., cuts shutter time lag to approx. 0.01 sec., and raises the maximum continuous shooting speed to 12fps.

Switching between phase detection and contrast AF,
New Intelligent Hybrid AF autofocuses in as fast as 0.06 sec.*3

Depending on the scene, Intelligent Hybrid AF instantly switches between high-speed phase detection AF and contrast AF, which can focus on the subject even in dark scenes. Applying the fastest algorithm according to the targeted subject and scene, it can bring your subject into clear focus in as fast as 0.06 sec.*3 so those priceless moments are clearly and crisply caught by your lens.

High-speed 12fps (max.11frames*4) Continuous shooting **NEW**

The combination of the improved processing speed of the EXR Processor II and fast readout speed of the X-Trans CMOS II sensor enables high-speed 12fps(max.11 frames*4) continuous shooting at full 12-Megapixel resolution. This is particularly useful when shooting moving subjects and later selecting the best shot.

Start-up time
0.5 sec.*2

Photography interval
0.5 sec.

Shutter time lag
0.01 sec.

World's Fastest AF
0.06 sec.*3

X-TRANS CMOS II

OLPF-less architecture and the original pixel array are the keys to resolution rivaling larger sensors. Also the unique integration of phase detection pixels in the array contributes to the dramatic leap in AF speed.

What is OLPF-less architecture?
By eliminating the need for an optical low-pass filter, the sensor delivers higher resolution while inhibiting moiré and false colors.



X-TRANS CMOS II & EXR PROCESSOR II

NEW

*1: Compared with the EXR Processor Pro. *2: Quick start mode. *3: FUJIFILM research as of November 2012. Compared with other digital cameras equipped with 2/3-inch sensor or larger, based on CIPA standards, and conducted in High Performance mode at maximum wide-angle position with AREA-AF. *4: Max. number of frames can be shot in JPEG setting.



Rotate the zoom ring for “instant ON” shooting and smooth high-precision framing with manual zoom controls.

Bright F2.0~F2.8 FUJINON 4x Manual Optical Zoom Lens

The lens features superb F2.0-2.8 brightness and a 4x optical zoom that promises high-resolution optical performance across the entire range from 28mm* wide angle to 112mm* telephoto. From the aspherical and ED lenses to high-refractive index lens, every element in the design is made from high-performance optical glass and treated with a multi-layer HT-EBC (High Transmittance Electron Beam Coating) for high resistance to ghosting and lens flare.

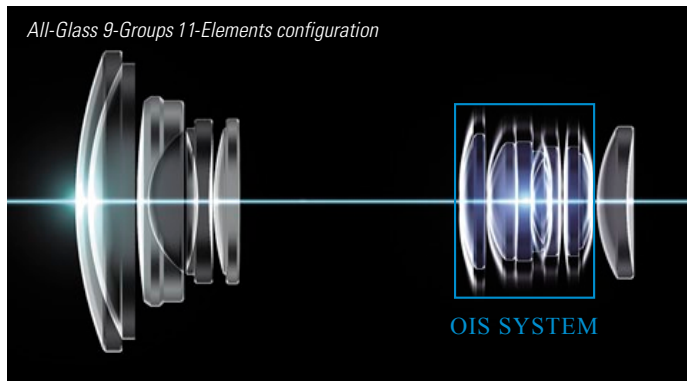
Bright lens performance across the zoom range plus highly effective optical image stabilization.

With a maximum aperture of F2.0 at wide angle and F2.8 at its maximum telephoto setting, this zoom is an extremely bright lens that can produce beautiful defocused effects across the zoom range. The built-in OIS (optical image stabilization) mechanism delivers an image stabilizing effect equivalent to 4 stops and is extremely effective in preventing blurring caused by camera shake or subject movement.

Advanced performance in a compact body.

High optical zoom performance and the freedom to enjoy it anytime, anywhere – this is the essence of X20 photography! Less than half the depth of conventional compact system cameras, the compact X20 body is a slim 56.8mm including the retracted lens. Designed to be your constant companion, the lightweight compact form easily slips into your bag or pocket.

• Body size comparison



1cm Super Macro for close-ups with a soft “bokeh” effect.

At a distance of just 1cm, the X20 can take advantage of the brightness of its F2.0 lens and 7-blade aperture diaphragm to macro photograph all the exquisite detail of your subject with a beautiful defocused “bokeh” background effect.



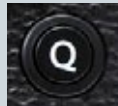
F2.0-F2.8 28-112mm
4x Optical Zoom

*35mm format equivalent

The small compact with big creative possibilities.

Mode Dial & Q (Quick Menu) Button for Simple Access to Artistic Expression

By turning the mode dial, you can smoothly select Advanced Filters, change shooting modes and switch to user-defined custom settings. With the Q (Quick Menu) Button, you can skip directly to a choice of ISO sensitivity, Film Simulation and other frequently used settings. Then just use the selector button and the main or sub command dial to choose and adjust settings even while shooting.



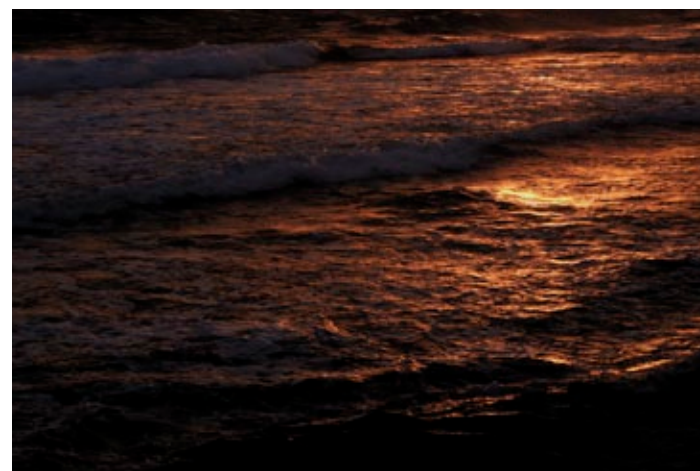
Advanced Filters. Artistic photography made fun and simple. NEW

Featuring a choice of 8 artistic effects, Advanced Filters make it easy to transform your photo into a work of art. Before you press the shutter, you can preview the effect on the LCD monitor. Manual control of the filters also lets you fine-tune brightness.



【 High Key 】

Enhance brightness and reduce contrast to lighten tonal reproduction.



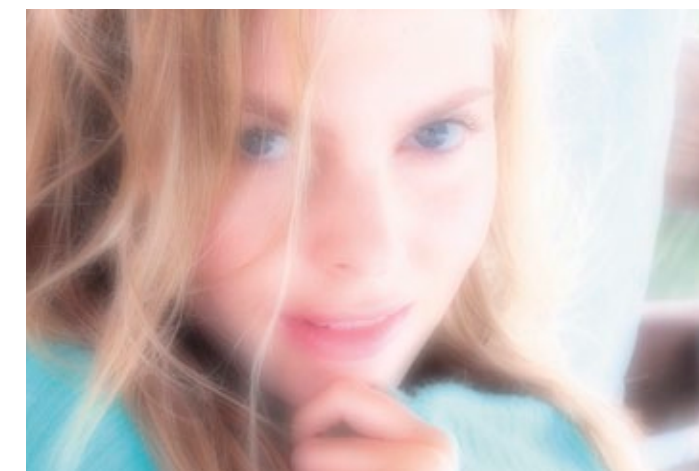
【 Low Key 】

Create uniformly dark tones with few areas of emphasized highlights.



【 Dynamic Tone 】

Create a fantasy effect by dynamically-modulated tonal reproduction.



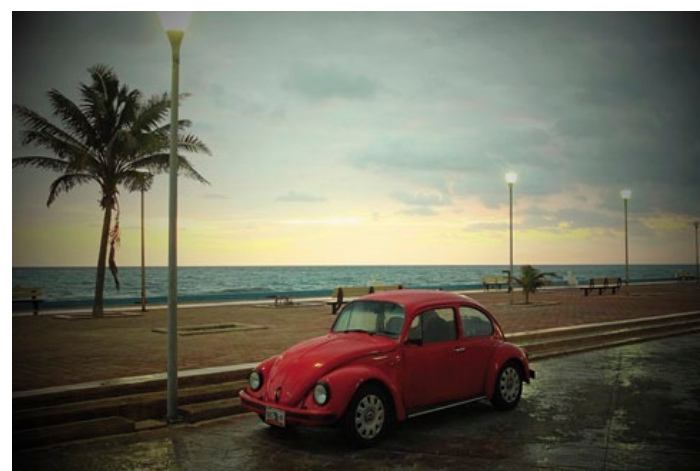
【 Soft Focus 】

Create a look that is evenly soft throughout the whole image.



【 Pop Color 】

Emphasizes contrast and color saturation.



【 Toy Camera 】

Create shaded borders as if you were taking a photo on a toy camera.



【 Miniature 】

Adds top and bottom blur for a diorama or miniature effect.



【 Partial Color 】 (Red/Orange/Yellow/Green/Blue/Purple)

Retain one selected original color and change the rest of the photo to black and white.

Artistic Expression

Multiple Exposure

Expand your range of photographic expression. NEW

Just select Multiple Exposure mode and take your first shot using the LCD monitor. Next, while viewing the first image, you can frame and shoot the second exposure. This ability to precisely position and focus the second shot lets you not only "see" how the finished Multiple Exposure image will look, but also explore other creative photographic possibilities.



1st shot



2nd shot



Multiple Exposure result



Signature color expression by FUJIFILM
Explore the beautiful tonality of Film Simulation modes.

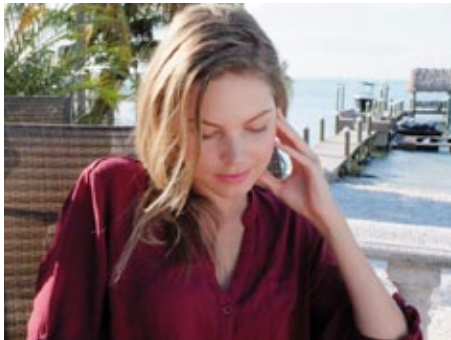
Just like choosing the ideal film for your creative direction, this powerful mode lets you simulate the film color and tonal qualities of FUJIFILM's acclaimed color reversal films: the natural look of PROVIA, the dramatic tonality and vivid colors of Velvia, and the soft tones and beautiful skin color reproduction of ASTIA. Faithfully reproducing Fujichrome color quality loved by professional photographers, Film Simulation transforms your vision into masterpieces of color expression. You can also replicate the timeless beauty of monochrome film photography with a selection of monochrome filters.



【 PROVIA 】



【 Velvia 】



【 ASTIA 】



No FILTER



Ye FILTER



R FILTER



G FILTER



SEPIA

【 MONOCHROME 】 Ye FILTER/R FILTER/G FILTER

Heighten contrast with the Ye filter and R filter. Brighten greens and deepen reds with the G filter. Just as you once selected a filter and printing paper to complement your creative vision, the X20 empowers expression with an array of filter effects to explore.

【 SEPIA 】

Defined by a gracefully soft expression and warm tones, SEPIA is a wonderful choice when shooting an especially memorable photo of a wedding, birthday or other commemorative occasion.

Reproduce the timeless colors of photographic film, and breathe life into your images.



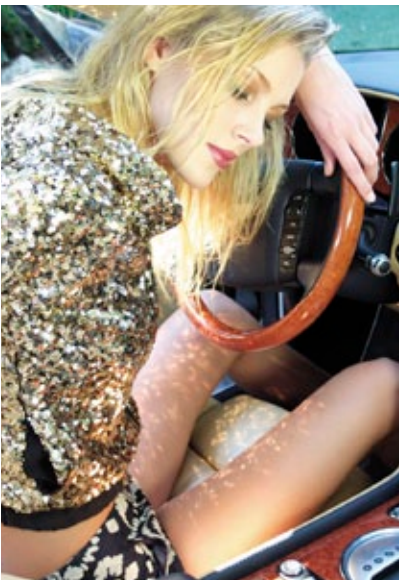
Every detail captured with gentle tonality.

【 PRO Neg.Std 】 **NEW**

Beloved of studio portrait photographers, the look of professional color negative film is replicated in the exceptionally soft and smooth skin tonality of Pro Neg.Std. In outdoor shooting, this mode exquisitely captures even subtleties in the atmosphere of the scene and produces a photo with extremely soft tones



【 PRO Neg.Std 】



【 PRO Neg.Hi 】

Heighten tonal contrasts while preserving soft skin tones.

【 PRO Neg.Hi 】 **NEW**

Developed for subjects in motion and constantly changing conditions, PRO Neg.Hi slightly enhances color saturation and contrasts. Even in soft light, this mode brings out subtle color contrasts. In outdoor portraits, it can preserve natural soft skin tones while accenting the tonal contrasts that define dramatic scenes.

Film Simulation mode × Full HD Movie Shooting

Enjoy the exceptional definition of Full HD Movie Shooting!



Full HD Movie (1920 x 1080) mode features 60fps for smoother capture of the action. Shooting movies at the high bit-rate of 36 Mbps results in reduced noise and enhanced image quality and clarity that reveals every detail from individual leaves in the trees to subtle changes in facial expression. You can also take advantage of Monochrome and the vivid color expression of other Film Simulation modes, and exploit the brightness of the lens to shoot movies with a dreamy "bokeh" effect. Also the new movie scene recognition function can automatically recognize 6 types of scene and optimize settings for beautiful results under a variety of shooting conditions.

Make Cinema Magic with HD Movie × Film Simulation



【 PROVIA 】

True-to-life natural tonality and color reproduction.



【 Velvia 】

Shoot HD Movies in the vibrant colors of Velvia.



【 Monochrome 】

Capture the action in richly expressive monochrome tones.

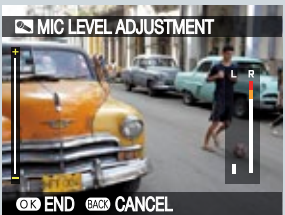
Intelligent Hybrid AF also keeps you focused on your movie.

Automatically switching between phase detection AF and contrast AF depending on the scene, Intelligent Hybrid AF also demonstrates high-speed and high precision autofocusing performance in movie shooting. In addition to AF-S (single) and AF-C (continuous), you can also select Manual and use the focus ring for hands-on focus control of the scene and subject.



■ USB Multi-connector port

Connect the external stereo microphone (sold separately) to the X20's new USB Multi-connector port using the adapter included with the microphone and record audio quality to match the visual beauty of your HD movies.



■ MIC LEVEL ADJUSTMENT

Adjust the microphone volume level (4 settings) as you monitor the level meter to record audio free from either loss or distortion.



■ WHITE BALANCE Setting

Kelvin temperature setting is available for detailed correction to match the color temperature of the shooting location. Fine tune white balance to capture natural skin color or to express your creative intent.

The premium style and performance you've been looking for in a lightweight "anytime, anywhere" compact.



1. Classic silver or discreet black. The choice is yours.

The X20 is available in a cool retro two-tone silver and black and also in a more traditional all black.

2. The precision-milled metal zoom ring and dials provide the feel of quality and the pleasure of intuitive operation.

Milled from solid metal to exacting measurements, the zoom ring, mode dial and exposure compensation dial provide visible and tactile confirmation of the quality of the X20 experience. The superb grip of the knurled dial finish, the sensation of just the right torque when you twist them and the satisfying "click" at each aperture step add up to smooth operation without needing to move your eye from the viewfinder.

3. Lightweight and strong die-cast magnesium body

The choice of die-cast magnesium for the body not only produces a high-degree of strength without a weight penalty, but also facilitates the creation of X20's subtle curved surfaces. Finished with a steel-like sheen and specially coated, the result is authentic craftsmanship with an air of authority.

4. Leather-like finish delivers a quality look and durability

Synthetic leather is the practical choice that promises resistance to the elements and higher durability, while an original manufacturing process reproduces the look and feel of authentic leather. In terms of functionality, the material provides a reassuring and comfortable non-slip grip.

5. "MADE IN JAPAN"

Each and every part of this camera is the product of high precision engineering and the highest quality standards, it is "made in Japan" quality.

6. Release the power of your creativity.

From the size and natural placement of the shutter button, to the satisfying feel of its release, every touch of the shutter fuels your hunger to take more photos. Users can select from 4 types of shutter sound: Lens Shutter, Focal Plane Shutter, Mirror Up, and Silent Shutter. You can also use a screw-on remote shutter release cable (sold separately) for shake-sensitive exposures.

7. Graphical User Interface lets you focus on the shot.

As you adjust the zoom ring or turn the command dial, the X20's graphical interface displays changes in the focal distance, aperture value and shutter speed in real time. Also the minimized number of icons and other indicators in the display lets you see you all the information you need free from distractions, so you can concentrate on the shot.

8. Metal lens cap

Coordinating with the texture of X20's metal body, the aluminum lens cap looks the part and fits snugly thanks to its fabric liner attached to its step-machined inner surface.

9. Q (Quick Menu) Button, Fast Shortcut to Shooting Menu Settings

Just press the Q (Quick Menu) button to skip directly to a list display of ISO sensitivity setting, White Balance, Film Simulation and other frequently used shooting settings. Select the menu item with the selector button and then use the main or sub command dial to swiftly change settings while shooting.

10. Pop-up Flash is just one press away.

The built-in high-precision flash system features a manual pop-up flash that is out of sight until it is needed to deliver the ideal amount of flash.

X20 Design



X20 Accessories

Accessorize your X20 with style and performance.



Stylish protection for the “on-the-go” photographer
“Quick shot” Leather case (sold separately) **NEW**

With its easy-opening, stylish design, it adds pleasure to photography. The quality is easily visible, down to the color of the stitches and the spaces in between them. The top of the case snaps shut via a hidden magnet to prevent unnecessary damage to the lens.



Special TTL Flash EF-X20/EF-42/EF-20 (sold separately)

Three external flash models are available for the X20:
EF-X20 (GN20/ISO100•m), EF-20 (GN20/ISO100•m),
and EF-42 (GN42, ISO100•m).



Lens Hood, Hood Cap and
Special Protector Filter 3 pc Set
(available in silver or black) (sold separately) **NEW**

The 3-item accessory set consists of a lens hood with a slit to avoid blocking the viewfinder view, a Hood Cap and a Protector Filter specially treated with a multi-layer Super-EBC (Electron Beam Coating) for improved resistance to ghosting and lens flare. Available in silver or black, you can select the set that matches the color and design of your X20.



Shown with only the Protector Filter attached.



Bespoke Lens Hood (w/Adapter Ring) (sold separately)

Both the Lens Hood and Adapter Ring are precision machined from metal and can be separated. Attached directly to the front of the lens, the hood has a slit to avoid blocking the viewfinder view. You can also use the adapter ring to attach commercially available 52mm filters.



External stereo microphone (sold separately) **NEW**

Connect the external stereo microphone (sold separately) to the X20's new USB Multi-connector port using the adapter included with the microphone and record audio quality to match the visual beauty of your HD movies. Adjust the microphone volume level (4 settings) while watching the level meter for optimum audio recording to prevent either loss or distortion.



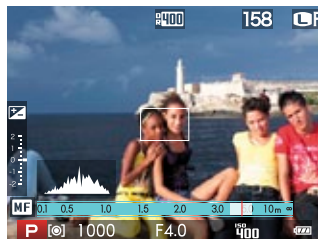
Shooting and Playback functions let you aim to impress.

【 High contrast LCD monitor 】

The bright, high contrast 2.8-inch 460K-dot LCD monitor lets you comfortably compose and preview your shots. With its ultra-wide viewing angle, you can hold the camera high or low to frame your shot, and later let everyone gather around to enjoy the results.

■ Check all your shooting settings at a glance on the LCD.

Exposure, shutter speed, histogram and other shooting data are all displayed on the LCD. At a glance, you can ensure that you capture the image you are after.



■ Aspect Ratio

X20 offers a choice of 4:3, 3:2, 16:9, and 1:1 aspect ratios.



■ Histogram Display

Before shooting, the built-in histogram display provides an at-a-glance confirmation of brightness levels. Together with the exposure compensation dial on the top control deck, this tool makes it simple to confirm you have the right exposure setting, and take great photos.



■ Electronic horizon leveling gauge

When composing a shot on the generous LCD, the built-in electronic level display makes it easy to align the image with the true horizon.



■ Playback Functions

After shooting, take advantage of the wide array of handy playback functions including Shooting Data display to review which settings were used when the image was taken, Focus Point Zoom for zooming in to check focal precision and picture quality, and “Red Eye Removal” for automatic detection and correction of any red-eye effect in portraits, in-camera, after the shot is taken. Also in the Micro Thumbnail View, you can display up to 100 thumbnail images on screen at once.

【 Menu Screen 】

■ Swift Menu Page Selection and Scroll-free Navigation Within Each Page

In the Shooting and Playback menus, functions are organized into tabbed single-page screens for fast selection and setting. Just select a tab and find the item in the displayed list without scrolling.



【 Exposure Control 】

■ Aperture and Shutter Speed

Optimally positioned so you can concentrate on framing your shot, the aperture and shutter speed settings are selected via the main command and sub-command dials for quick and easy switching between Aperture Priority AE, Shutter Speed Priority AE, Program AE and Manual exposure settings.

■ Exposure Compensation Dial

For detailed exposure control, the Exposure Compensation Dial is in perfect reach of your right thumb for smooth $\pm 2\text{EV}$ adjustment in 1/3EV steps without taking your eye away from your shot.



■ Easy-to-use AE/AF Lock button

With a touch of the special AE/AF Lock button on the back of the camera body, you can lock both exposure and focus for the subject. Using the setup menu, you can also set the button to lock only AE or AF.



■ Selectable Metering modes

From a choice of “MULTI” metering for accurate response to a variety of lighting conditions, “SPOT” metering for precise reading of approximately 2% of image area in the center of the screen, and “AVERAGE” metering for an average exposure setting for the entire scene, you can swiftly select the best metering for your shot.



【 ADVANCED SR AUTO 】 NEW

■ Automatic face and scene recognition for ideal settings every shot.

Instantly recognizing the face and every scene type from still portraits to landscapes and even detecting motion, ADVANCED SR Auto with 64 shooting patterns automatically optimizes focus, exposure, sensitivity and other settings, letting you devote all your attention to framing the shot.



【 Intelligent Digital Zoom 】

■ Digitally zoom to 8x and capture with crisp definition.

Intelligent Digital Zoom extends the X20's 4x optical zoom to the equivalent of an 8x zoom and uses advanced image processing to capture the moment with amazingly sharp resolution and minimized noise and without loss of smooth tonality.



1x



8x

【 Focusing 】

■ Focus Mode selector (AF-S, AF-C and MF)

The focus mode selector lever on the front of the camera lets you smoothly switch between AF-S (Single AF), AF-C (Continuous AF) and MF (Manual).



■ Selectable AF with a 49-point Metering matrix

Within the 49-point matrix of the auto focus area on the screen, AF accurately and swiftly recognizes the primary subject and brings it into crystal clear focus. It also lets you freely select the position of the AF frame. Using the LCD monitor, you also can change the AF frame size and pinpoint the focusing.



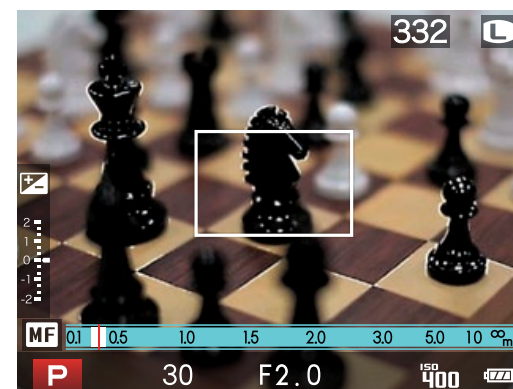
■ Manual Focus

The distance index bar displayed on the LCD together with the depth of field scale and aperture value provide helpful guides for focusing. While checking the image in Live View by rotating the sub command dial, it is easy to adjust the focus. Turn on “Focus Check” in the menu and you can use focus point zoom to confirm a sharp focus.



■ Focus Peak Highlight function for sharper manual focusing. NEW

When manually adjusting focus, this function highlights high contrast areas of your subject for smoother and more precise fine tuning of focusing.



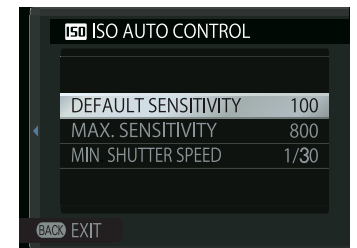
■ AF Assist Lamp for Low-Light Scenes

In low light scenes when even the subject is hard to see through the viewfinder, AF Assist Lamp illuminates the subject and assists Auto Focus.

【 ISO Sensitivity 】

■ ISO100 ~12800 Sensitivity setting range

Select from the broad sensitivity range of ISO 100~12800 for shooting at a full 12-megapixel resolution. The X20 also lets you set the AUTO ISO range (up to ISO 3200) and the shutter speed limit. For quick access to ISO settings, you can assign this function to the Fn or Q Button.



【 Flash 】

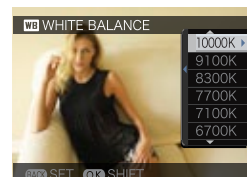
■ Super Intelligent Flash

Automatically delivering the ideal amount of flash for every scene, the X20 clearly and brightly captures faces even under strong backlit or dark conditions. Also when shooting macro shots dim lighting, this smart flash prevents the washout of the subject and background. When even more light is required or you're shooting with the lens hood attached, you can use a separately sold TTL flash.

【 White Balance setting 】

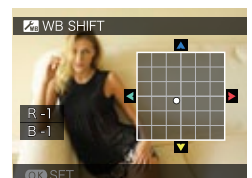
■ Extensive White Balance control including Kelvin Value setting

In addition to Auto White Balance, the X20 also offers a choice of white balance presets to compensate for the color of different light sources. Users can also set a Custom White Balance using a gray card or other surface, or select the optimum Kelvin value.



■ Precise White Balance setting

For precision correction of white balance, or to explore the creative effects you can achieve from filters, the X20 lets you fine tune white balance by adjusting R (red) \leftrightarrow Cy (cyan) and B (blue) \leftrightarrow Ye (yellow) in ± 9 steps.



【 Motion Panorama360 】

■ Immersive 360° Panoramic photos

Just sweep the camera right-left or up-down to shoot giant panoramas up to 360°. When you view the panorama playing back on your camera or personal computer, you can enjoy a seamless panorama image with both ends stitched together to create a “cylinder” view.



【 QUICK START MODE 】

- From SLEEP to ON in about 0.5 sec.

After turning OFF the power, the X20 enters a “sleep” mode (for a maximum of 24 minutes). If the power is turned ON during this time, the X20 “wakes up” instantly, reducing the normal startup time from 0.9 sec. to approx. 0.5 sec. ready for you to frame and capture the moment.

【 High Performance Mode 】 NEW

- Ultra fast 0.06 sec.* AF and more.

From instantaneous autofocusing in as fast as 0.06 sec.* to enhanced LCD monitor brightness, this mode lets you enjoy the ultimate performance of the X20.

* FUJIFILM research based on CIPA guidelines and conducted in “High Performance” mode.

【 High-Speed Continuous Shooting & Bracketing Functions 】

- Maximum High-Speed Continuous Shooting Speed of 12fps (max.11 frames*)

Shoot at a maximum burst speed of 12 fps at full 12-megapixel resolution to capture a series of exposures of moving subjects and other challenging photographic scenes and later select the best shot.

* Max. number of frames can be shot in JPEG setting

- Selection of various Auto Bracketing functions

Empowering you with a choice of 4 different auto bracketing functions (AE, ISO Sensitivity, Dynamic Range and Film Simulation), the X20 lets you experience a whole world of photographic expression.

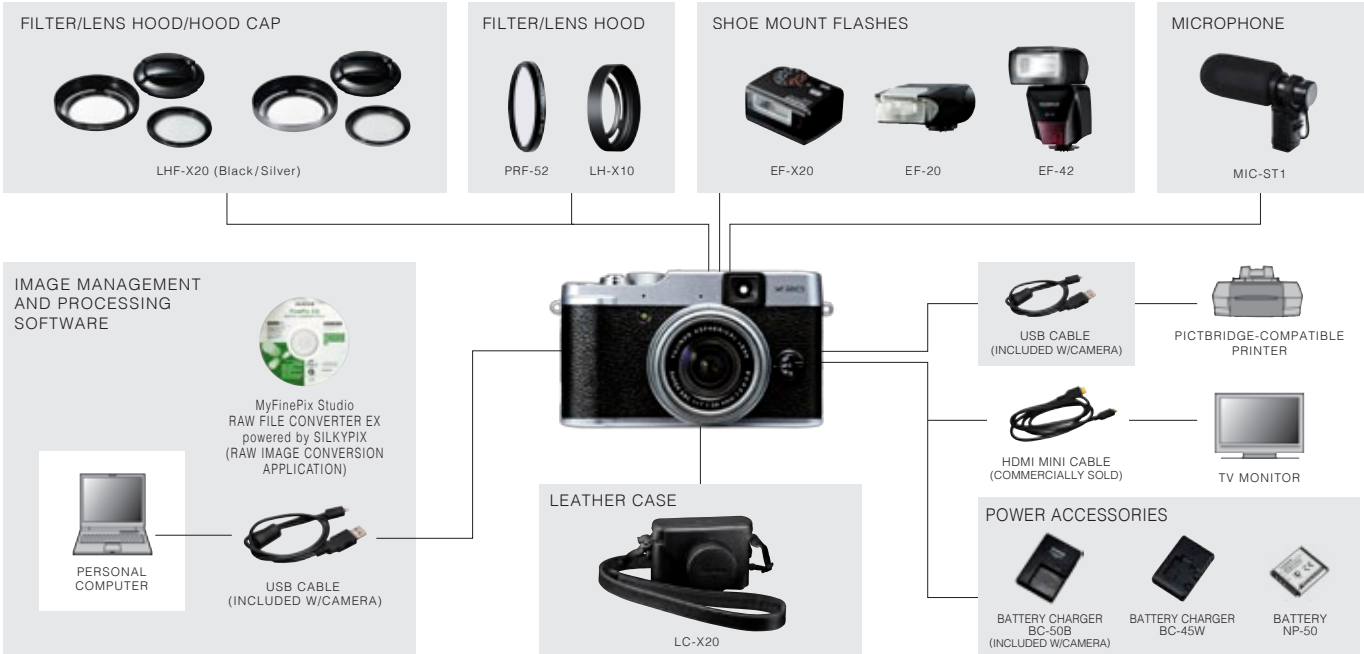
- AE Bracketing

One press of the shutter captures 3 shots of the same scene at different exposures. AE bracketing can be set in 1/3, 2/3 and 1EV steps.

- ISO Sensitivity Bracketing

Based on a single exposure, the scene is automatically reproduced as 3 images, each with a different ISO sensitivity and without changing the shutter speed and aperture, letting you capture the moment with varying degrees of brightness. Setting is possible in 1/3, 2/3 and 1EV steps.

X20 SYSTEM



- Dynamic Range Bracketing

Capture 3 exposures of the same scene with high-speed continuous shooting, each at a different dynamic range setting (100%, 200% & 400%).

- Film Simulation Bracketing

Just release the shutter once and produce 3 images of the scene based on a single exposure, each image with a different Film Simulation effect that you have freely selected and pre-set.

【 Customization functions 】

- Fn Button for one-touch access to a frequently used function

Assign any one of the following frequently used functions to the Fn (Function) button and enjoy smooth one-touch controls during shooting:

- ISO Sensitivity (default setting) •Image Size •Image Quality Mode •Dynamic Range •Film Simulation •AF Mode Selection (area selection/auto area) •Face Detection •Intelligent Digital Zoom, etc.

- Save Custom Shooting Settings

Create and save up to 2 sets of user defined shooting settings covering various parameters from ISO sensitivity to white balance for instant recall.

【 In-camera RAW Converter 】

The X20's built-in RAW data converter lets you view and edit your results without the need for your PC. The conversion of RAW data not only takes into account exposure compensation, white balance and other in-camera image quality control settings, but also lets the user apply Film Simulation modes in the converter mode.

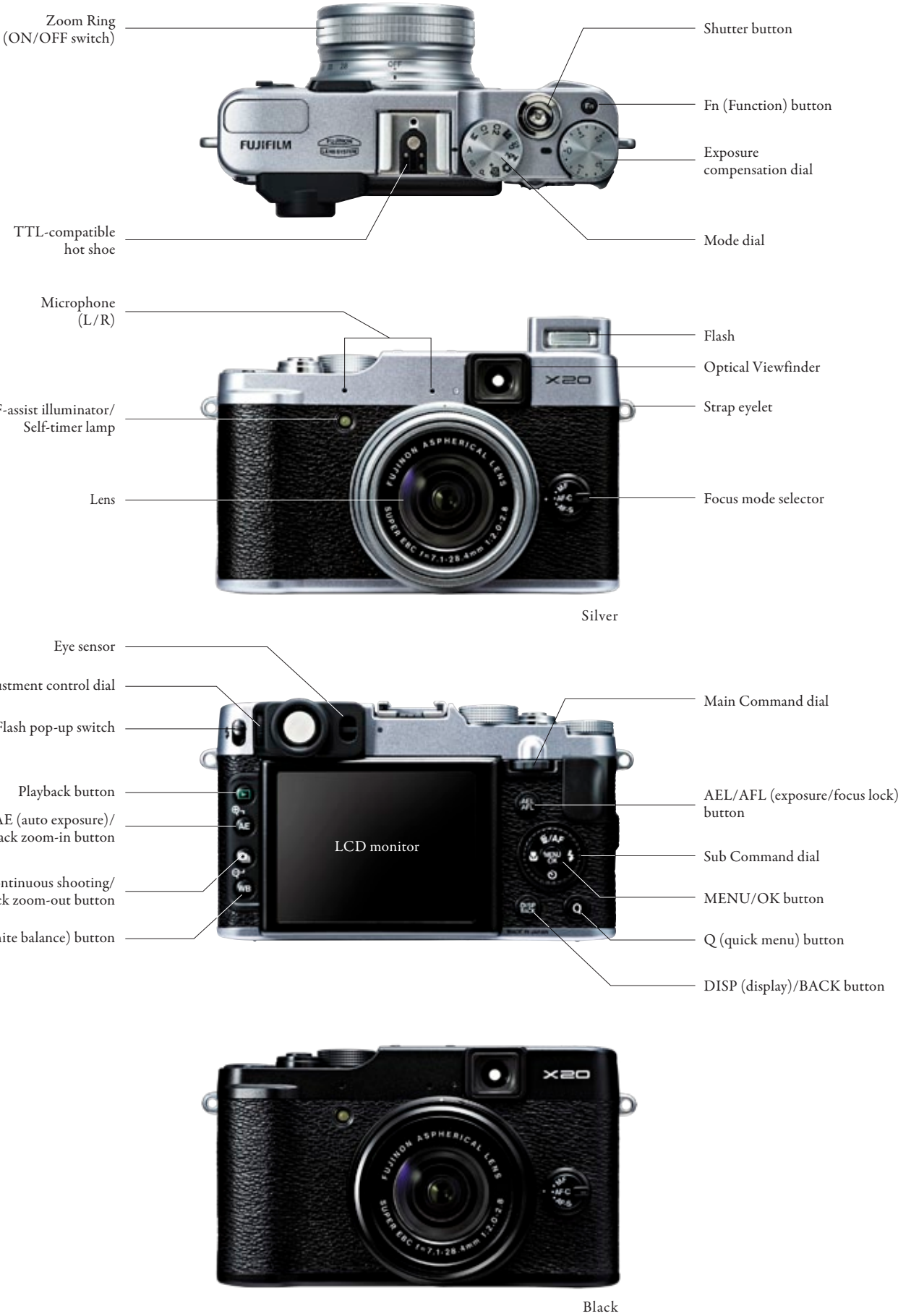
- Special X20 RAW Conversion Software included

For the management, viewing and conversion of RAW image data on your PC, you will find a special X20 version of the powerful and easy-to-use RAW conversion software powered by SILKYPIX® included in your camera box.

【 Eye-Fi Card Compatibility 】 NEW

- Wireless Photo Storage in Your Personal Computer

The X20 supports Eye-Fi SD memory cards with built-in WiFi for easy wireless transfer of image data to your personal computer. As you shoot, your photos can be swiftly uploaded and stored on your personal computer.



X20 Specifications

Model name		FUJIFILM X20
Number of effective pixels		12.0 million pixels
Image sensor		2/3-inch X-Trans CMOSII with primary color filter
Storage media		Internal memory / SD / SDHC / SDXC(UHS-I) memory card*1
File format	Still image	JPEG (Exif Ver 2.3*2), RAW (RAF format), RAW+JPEG (Design rule for Camera File system compliant / DPOF-compatible)
	Movie	MOV (H.264, Audio: Linear PCM/stereo sound)
Number of recorded pixels		L: <4:3> 4000 × 3000 <3:2> 4000 × 2664 <16:9> 4000 × 2248 <1:1> 2992 × 2992 M: <4:3> 2816 × 2112 <3:2> 2816 × 1864 <16:9> 2816 × 1584 <1:1> 2112 × 2112 S: <4:3> 2048 × 1536 <3:2> 2048 × 1360 <16:9> 1920 × 1080 <1:1> 1536 × 1536 <Motion Panorama> 360° Vertical: 11520 × 1624 Horizontal: 11520 × 1080 / 180° Vertical: 5760 × 1624 Horizontal: 5760 × 1080 / 120° Vertical: 3840 × 1624 Horizontal: 3840 × 1080
Lens	Name	Fujinon 4× optical zoom lens
	Focal length	f≈7.1 - 28.4mm, 28 - 112mm (35mm format equivalent)
	Full-aperture	F2.0 (Wide) - F2.8 (Telephoto)
	Constitution	9 groups 11 lenses (3 aspherical glass molded lenses included)
Digital zoom		Intelligent digital zoom approx. 2× (up to 8× when combined with optical zoom)
Aperture		F2.0 - F11 (Wide), F2.8 - F11 (Telephoto) 1/3EV step (controlled 7-blade aperture diaphragm)
Focus distance (from lens surface)		Normal : Wide: Approx. 50cm / 1.6 ft. to infinity Telephoto: Approx. 80cm / 2.6 ft. to infinity Macro: Wide: Approx. 10cm - 3.0m / 3.9 in. - 9.8 ft. Telephoto: Approx. 50cm - 3.0m / 1.6 ft. - 9.8 ft. Super Macro: Approx. 1.0cm - 1.0m / 0.4 in. - 3.3 ft.
Sensitivity		AUTO (Control available up to ISO 3200) Equivalent to ISO 100 / 200 / 250 / 320 / 400 / 500 / 640 / 800 / 1000 / 1250 / 1600 / 2000 / 2500 / 3200 / 4000 / 5000 / 6400 / 12800 (Standard Output Sensitivity)
Exposure control		TTL 256-zone metering, Multi, Spot, Average
Exposure mode		Programmed AE, Aperture Priority AE, Shutter Priority AE, Manual
Mode dial		AUTO, ADVANCED SR AUTO, P, S, A, M, C1, C2, Movie, SP, Adv.
	Shooting modes	SP: Portrait, Portrait Enhancer, Landscape, Sport, Night, Night (Tripod), Fireworks, Sunset, Snow, Beach, Party, Flower, Text, Underwater
Image stabilizer		Lens shift type
Face detection		Yes
Exposure compensation		-2.0EV - +2.0EV 1/3EV step
Shutter speed		(Auto mode) 1/4 sec. to 1/4000* sec., (All other modes) 30 sec. to 1/4000* sec. *1/4000 sec. at small aperture, 1/1000 sec. at full aperture
Continuous shooting		Super High: approx. 12fps (max. 11 frames) High: approx. 9.0fps (max. 14 frames) Middle: approx. 6.0fps (max. 20 frames) Low: approx. 3.0fps (max. 39 frames) *Max. number of frames can be shot in JPEG setting.
Best Frame capture		Super High: approx. 12fps (max. 8 frames) High: approx. 9.0fps (max. 8 frames) Middle: approx. 6.0fps (max. 8 frames) Low: approx. 3.0fps (max. 8 frames) *Max. number of frames can be shot in JPEG setting.
Auto bracketing		AE Bracketing (±1/3EV, ±2/3EV, ±1EV), Film Simulation Bracketing (Any 3 types of Film Simulation selectable), Dynamic Range Bracketing (100%, 200%, 400%) ISO Sensitivity Bracketing (±1/3EV, ±2/3EV, ±1EV)
Focus	Mode	Single AF / Continuous AF / MF
	Type	Intelligent Hybrid AF (TTL contrast AF / TTL phase detection AF), AF assist illuminator available
	AF frame selection	Multi, Area, Tracking
White balance		Automatic scene recognition Preset: Fine, Shade, Fluorescent light (Daylight), Fluorescent light (Warm White), Fluorescent light (Cool White), Incandescent light, Underwater, Custom, Color temperature selection
Self-timer		10 sec. / 2 sec. delay
Flash		Auto Flash (Super Intelligent Flash) Effective range (ISO AUTO): Wide: Approx. 30cm - 7.0m / 11.7 in. - 22.9 ft. Telephoto: Approx. 50cm - 5.0m / 1.6 ft. - 16.4 ft.
Flash modes		Red-eye Removal OFF: Auto, Forced Flash, Suppressed Flash, Slow Synchro. Red-eye Removal ON: Red-eye Reduction Auto, Red-eye Reduction & Forced Flash, Suppressed Flash, Red-eye Reduction & Slow Synchro.
Hot shoe		YES
Viewfinder		Advanced Optical Viewfinder (equipped with Digital Trans Panel) Approx. 85% coverage Built-in eye sensor
LCD monitor		2.8-inch, approx. 460K-dot, TFT color LCD monitor, approx. 100% coverage
Movie recording		1920 × 1080 pixels (60fps) / 1280 × 720 pixels (60fps) / 640 × 480 pixels (30fps) with stereo sound, Optical zoom (manual) can be used. *SD memory card with a class 10 write speed (10MB/sec.) or better is recommended.
Photography functions		ADVANCED SR AUTO, Face Detection, Auto Red-eye Removal, Film Simulation, Framing Guideline, Frame No. memory, Histogram Display, Best Frame Capture, Adv. mode (Motion panorama360, Pro focus, Pro low light, Multiple Exposure), High Speed Movie (80 / 150 / 250fps), Electronic Level, RAW, Advanced Anti Blur, Focus Peak Highlight
Playback functions		Face Detection, Auto Red-eye Removal, Multi-frame Playback (with Micro Thumbnail), Protect, Crop, Resize, Slide Show, Image Rotate, Histogram Display, Exposure Warning, Photobook Assist, Image Search, Favorites, Mark for Upload, Panorama, Erase Selected Frames, RAW Conversion
Other functions		PictBridge, Exif Print, 35 Languages, Time difference, Silent mode
Terminal	Video output	—
	Digital interface	USB 2.0 High-Speed / Microphone input (only with MIC - ST1 with adapter sold separately)
	HDMI output	HDMI Mini connector
Power supply		NP-50 Li-ion battery (included), CP-50 with AC power adapter AC-5VX (sold separately)
Dimensions		117.0 (W) × 69.6 (H) × 56.8 (D) mm / 4.6 (W) × 2.7 (H) × 2.2 (D) in.
Weight		Approx. 353g / 12.4 oz. (including battery and memory card), Approx. 333g / 11.7 oz. (excluding battery and memory card)
Operating Temperature		0 - 40°C
Operating Humidity		10 - 80% (no condensation)
Guide to the number of available frames for battery operation		Approx. 270 frames (LCD: ON, AUTO mode) CIPA standard
Accessories included		Li-ion battery NP-50, Battery charger BC-50B, Shoulder strap, Lens cap, USB cable, CD-ROM*3, Owner's manual
Optional accessories		Li-ion battery NP-50, Battery charger BC-45W, Lens hood LH-X10, Lens hood and Protector filter LHF-X20, Leather case LC-X20, Shoe Mount Flash EF-42 / EF-20 / EF-X20, DC coupler CP-50, AC power adapter AC-5VX, Stereo microphone MIC-ST1

*1 Please see the Fujifilm website to check memory card compatibility. *2 Exif 2.3 is a digital camera file format that contains a variety of shooting information for optimal printing.

*3 OS compatibility Viewer software : Windows8/7/Vista/XP, RAW File Converter : Windows8/7/Vista/XP, Mac OS X 10.6 - OS X10.8

For more information, please visit our website:

http://fujifilm-x.com/x20/

Sample photos in this catalog are simulated images.

Microsoft, Windows and Windows logo are trademarks, or registered trademarks of Microsoft Corporation in the United States and/or other countries.
Macintosh and Mac OS are trademarks of Apple Computer, Inc., registered in the U.S. and other countries.
HDMI, the HDMI Logo, and High-Definition Multimedia Interface are either trademarks or registered trademarks of HDMI Licensing.
SDXC logo is a trademark. All other trademarks are the property of their respective holders.
SILKPIX® is a registered trademark of Ichikawa Soft Laboratory Co., Ltd. in Japan.



Specifications are subject to change without notice.